

# ECLIPSE T500 ROTARY ACTUATOR

**The easy, reliable way to optimize burner and valve control while simplifying set-up and maintenance**

The Eclipse T500 Series Rotary Actuator is an exceptional control for industrial burners, valves and dampers. Typically, it is used with an electronic controller to provide precise control of a butterfly valve to adjust flow to the burner.

Two basic models are available:

- Model T510 Bumping Actuator
- Model T520 Electronic Actuator

### **Ready for the World**

The T500 is ready to install anywhere in the world. It meets applicable U.S.A., Canadian and European standards and is supported by Eclipse around the globe.

### **Precise and Robust**

T500 is engineered for applications requiring a high degree of modulating precision and repeatability. This high level of accuracy enhances the performance of the burner. The quality construction provides reliable operation and delivers higher torque than competitors. T500 is NEMA 4 out of the box and it can be installed in outdoor applications.

### **Easy Installation**

T500 can be mounted in any position. A selection of mounting brackets and shafts provides installation flexibility and easy retrofits. In all applications, start-up is simplified. The shaft and cam disengagement clutch allows for the quick manual alignment of the actuator shaft and switch cams.

**For Burner and Valve Control Systems**

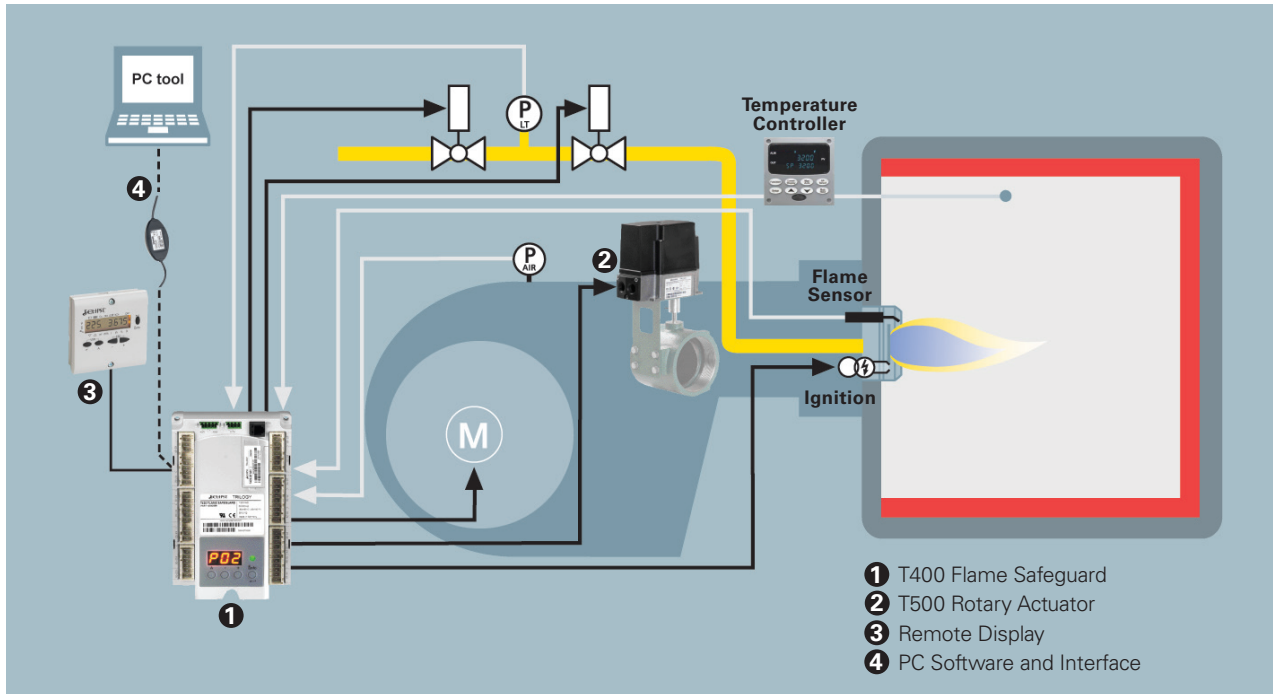


### **Advanced Features**

T500 provides up to six internal, easily adjustable switches and a selection of models for a variety of functions. In burner applications requiring high turndown and reliable ignition, the auxiliary switches can be applied to create separate positions for burner ignition and low fire. In dual fuel applications, additional switches can be used to create separate high fire, low fire or ignition positions for each fuel.

# T500 Rotary Actuator

For burner and valve control systems



Typical modulating gas burner control system with a T500 Series Rotary Actuator

## Trilogy Series Options



T400 Flame Safeguard

Eclipse recommends combining the T500 Series Actuator with the T400 Series Flame Safeguard for a perfectly integrated control solution. The T500 and T400 are designed to work in unison to deliver even more benefits when they are installed together. Choosing this globally approved package will provide you with easy ordering, lower installation costs, simplified start-up and precise burner control.

**ECLIPSE**<sup>®</sup>  
Innovative Thermal Solutions



**Offered By:**

Power Equipment Company  
2011 Williamsburg Road  
Richmond, Virginia 23231  
Phone (804) 236-3800  
Fax (804) 236-3882

---

[www.peconet.com](http://www.peconet.com)